



Culver CITY

Working with Large Business

Sony Pictures Entertainment Pilot

California Resource Recovery Association Conference
Zero Waste: Vision To Reality
August 5, 2009



Make up of a thriving city

Centrally located between the beach and downtown Los Angeles, Culver City is a hip, modern and progressive community that combines unique restaurants and entertainment with a rapidly expanding multimedia hub. Recent years have seen a surge of upwardly mobile diversity yet the city is able to maintain a small hometown feel.

- ✓ Local Government with a City Manager form of government
- ✓ Five member elected City Council,
- ✓ Unified School System,
- ✓ Police Department with a K-9 unit and a full service jail,
- ✓ ISO Class 1 rated Fire Department,
- ✓ Culver City Bus, second oldest municipal fleet in California

But wait, what about all the waste?

Culver City Public Works Environmental Programs and Operations houses the **Refuse and Recycling Division**.

- ✓ Municipal service exclusive,
- ✓ 50 city employees,
- ✓ 24 Vehicle Fleet,
- ✓ City owned and operated Transfer Station

Refuse and Recycling Division's primary goal is to enhance waste reduction and waste diversion through new and innovative recycling programs to decrease the city's solid waste going to landfills.

Creating Synergy

In-house management of all solid waste and recycling programs allows for a synergistic relationship between the community and the Refuse and Recycling Division.

Residential service 22,508
Commercial service 23,427

Total Refuse collected 45,935

Diverted Recycling 17,189
Green Waste collected 6,829

Composting Potential?

Annual tons



What about food?

Restaurants have the greatest opportunities to create effective waste diversion programs.

Pros

- ✓ In house control,
- ✓ Procurement Practice Management,
- ✓ Cost Effectiveness,
- ✓ Usually Employee lead
- ✓ Space issues

Cons

- ✓ In house control,
- ✓ Procurement Practice Management,
- ✓ Cost Effectiveness,
- ✓ Usually Employee lead
- ✓ Space issues

A city within a city



The former MGM lot was purchased by Sony, and became the headquarters for Columbia Pictures, Tri-Star Pictures, and Sony Pictures Entertainment (SPE).

SPE's main lot in Culver City, Sony Pictures Studios, has 22 sound stages, five eating establishments, post production offices, management offices, offers party venues on the lot along with conducting day to day operation.

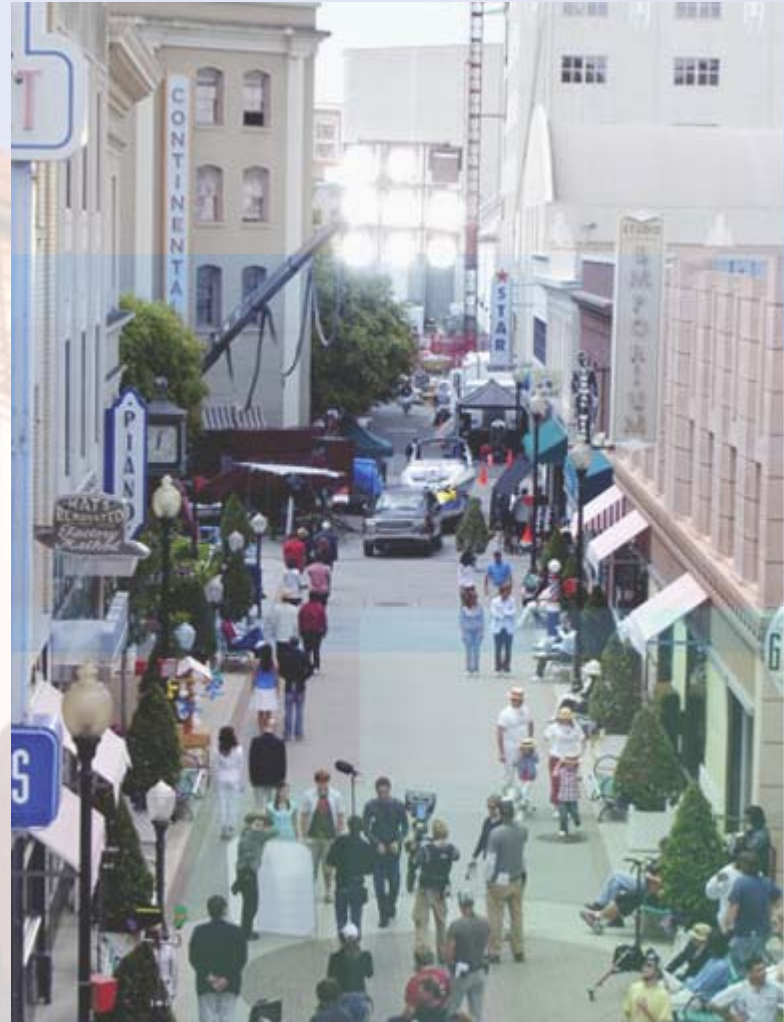
Culver CITY

California Resource Recovery Association Conference
Zero Waste: Vision To Reality
August 5, 2009

Learning together

Sony's Pilot Composting program includes all the components the city program would need to model.

Commitment
Education
Support



Culver CITY

California Resource Recovery Association Conference
Zero Waste: Vision To Reality
August 5, 2009

Everyone Agrees

In large businesses similar hierarchical structures exist as in municipalities'.

However, don't be discouraged. More and more goals of city's and companies are the same.

To move towards greener efforts, ideas and actions allows for all entities to weave together to create great models.





For more information on this and other
environmental programs in Culver City:

Culver City Public Works
Environmental Programs and Operations

Catherine Vargas, Environmental Coordinator
catherine.vargas@culvercity.org
310.253.6411